



ASKING PRICE

**£1,100,000**

**Howden Street**

London, SE15 4LB

**GARETH  
JAMES**

## PROPERTY SUMMARY

This well-presented terraced home offers spacious and versatile accommodation throughout. The property features a bright double reception room with a bay window, a convenient downstairs WC, and a generous kitchen/diner, ideal for both family living and entertaining.

3



1



2



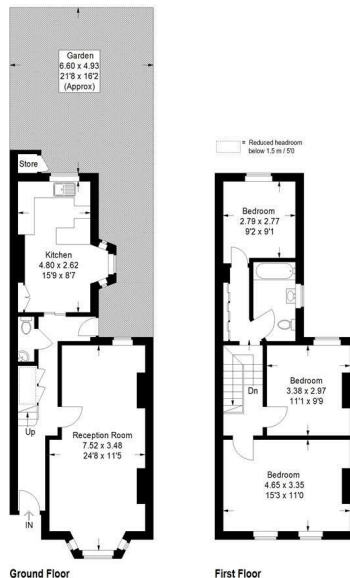






**Howden Street, SE15**

Approximate Gross Internal Area  
(Excluding Outside Store)  
95.3 sq m / 1027 sq ft



This plan is for layout guidance only. Not drawn to scale unless stated. Windows and door openings are approximate. Whilst every care is taken in the preparation of this plan, please check all dimensions, shapes and compass bearings before making any decisions reliant upon them. (ID1306671)

3	
1	
2	

Energy Efficiency Rating		
	Current	Potential
<i>Very energy efficient - lower running costs</i>		
(92 plus) <b>A</b>		
(81-91) <b>B</b>		
(69-80) <b>C</b>		
(55-68) <b>D</b>		
(39-54) <b>E</b>		
(21-38) <b>F</b>		
(1-20) <b>G</b>		
<i>Not energy efficient - higher running costs</i>		
<b>England &amp; Wales</b>	EU Directive 2002/91/EC	

Agents Note: Whilst every care has been taken to prepare these particulars, they are for guidance purposes only. All measurements are approximate and are for general guidance purposes only and whilst every care has been taken to ensure their accuracy, they should not be relied upon and potential buyers/tenants are advised to recheck the measurements

<b>GARETH JAMES</b>	<b>OFFICE ADDRESS</b>	<b>OFFICE DETAILS</b>
	129 Bellenden Road London SE15 4QY	02077324330 sales@garethjames.com <a href="https://www.garethjames.com/">https://www.garethjames.com/</a>